

*The History of
Repeaters in Indy*

As told by

Mike – WA9FDO

And others

It all started in California

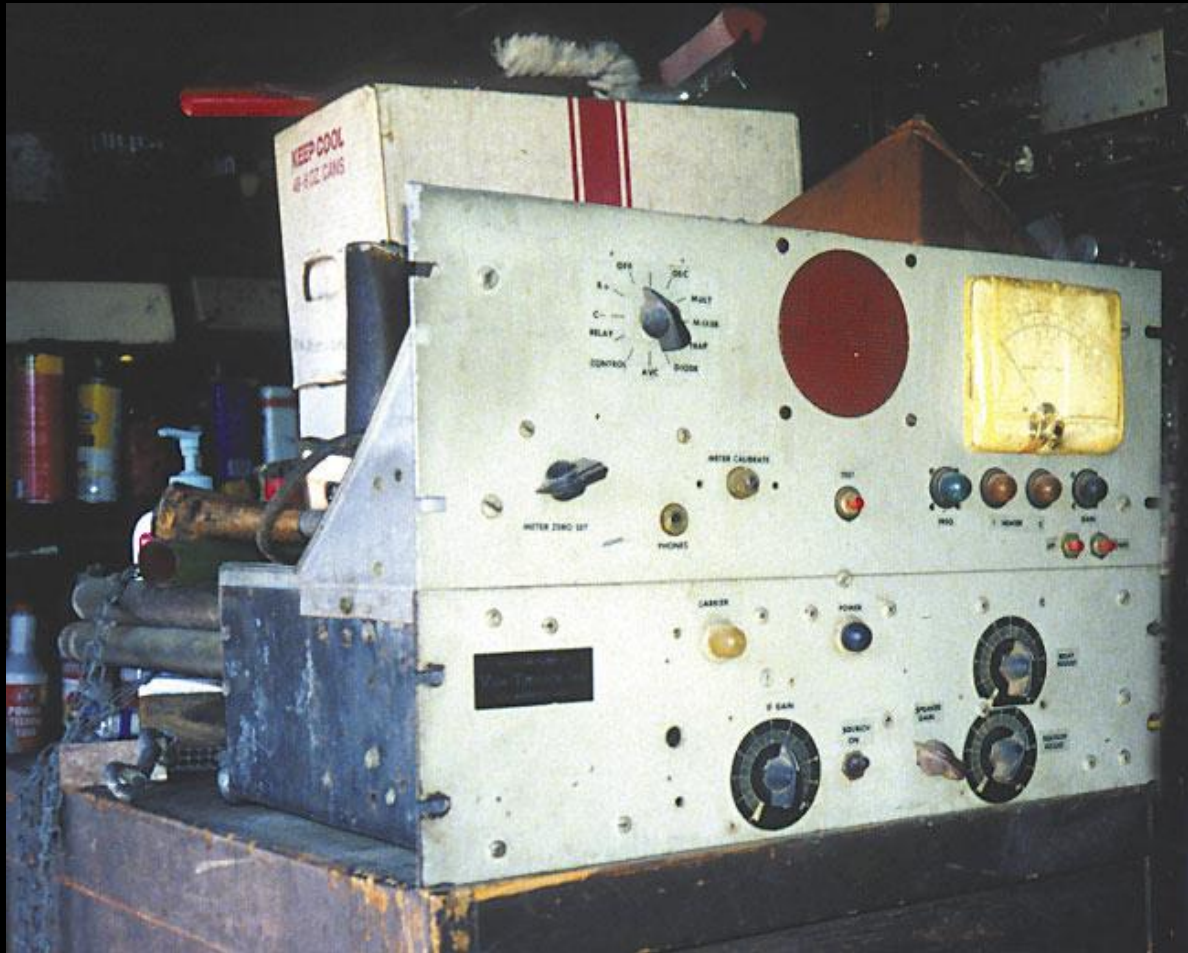
- 1954 - FIRST ATTEMPT BY A GROUP IN
IN SAN JOSE - K6GW - REQUIRED A
PHYSICAL OPERATOR PRESENT.
LASTED ABOUT 2 MONTHS.

ALL EARLY REPEATERS WERE
AM NOT FM AND USED WAR
SURPLUS EQUIPMENT

- 1956 - ART GENTRY, W6MEP, PUTS THE FIRST UNATTENDED “REPEATER” ON THE AIR FROM HIS HOME. LICENSED AS “REMOTE STATION”, K6MYK, BY FCC.
- 1957 – STATION IS MOVED TO A LOCATION JUST ABOVE THE HOLLYWOOD SIGN OVERLOOKING LOS ANGELES.



W6MYK 2m *AM* RECEIVER



Repeaters Come to Indy...

**The FIRST repeater in the City
146.34 / 146.76**

On AIR March 1, 1968

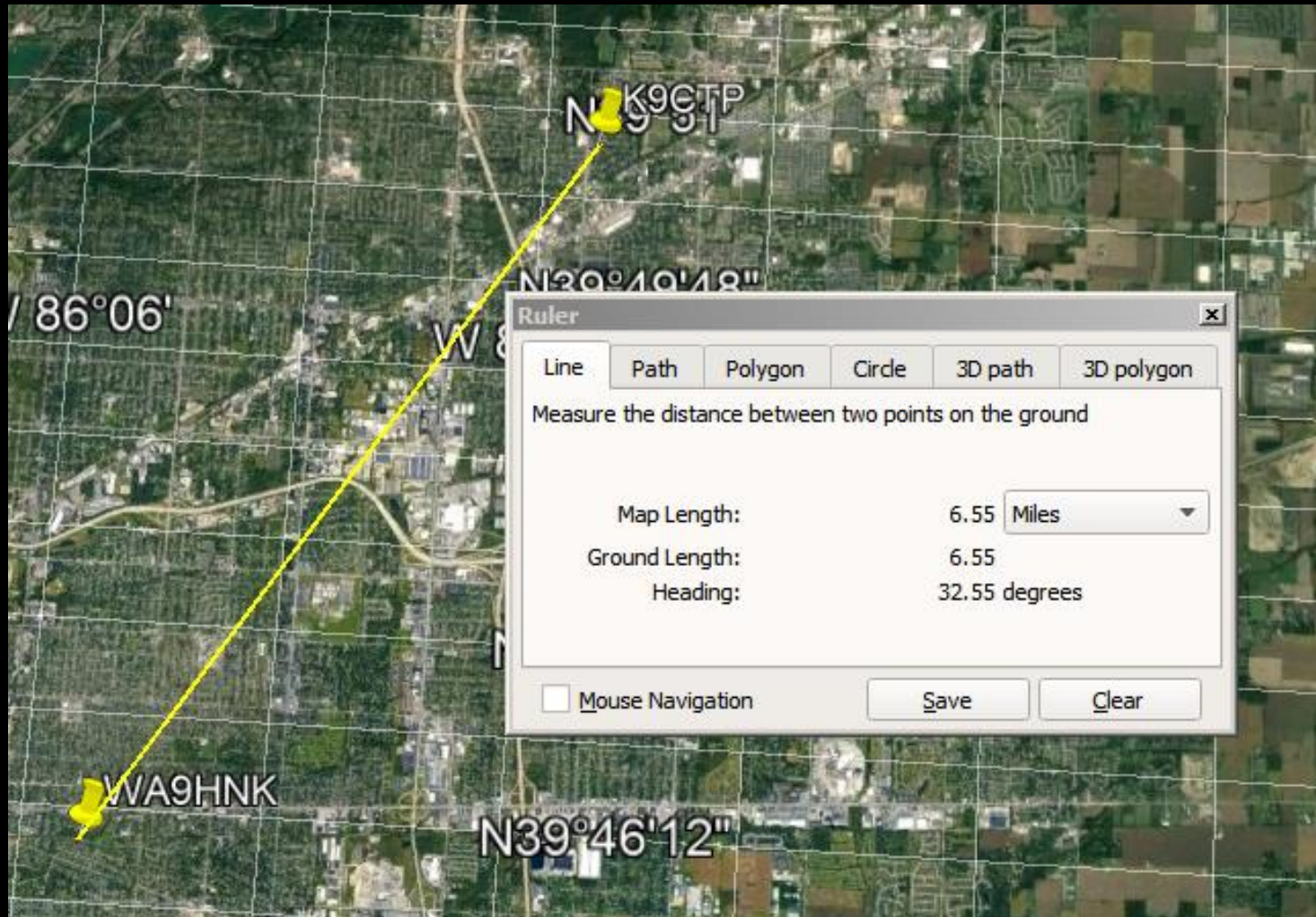
Split Site

TX at WA9HMK / RX at K9CTP

Bob Winko

Eddie Daphin

UHF LINK RX TO TX



In the Beginning....

**Moved to WISH-TV tower
December 1970**

**Used Split Antennas
TX at 150' RX at 180'**

**October 1971 C.I.R.A. formed
To take over system operation**

November 29, 1971

CIRA put 28/88 on air at WISH Tower

Both shared same antennas

And

Input to the 76 repeater changed

To 146.16 from 146.34

May 1972 call changed from WR9ABP to
K9LPW as a Memorial to Ray Felts.

System Improvements

1972 – Donated STATIONMASTER antenna

Installed at 300'

1973 – Homemade Duplexer by K9WEI

Installed.

1974 – New Homebrew touchtone control
system installed

System Improvements

1974 – Replaced original tube system
With Motorola solid state receiver and
Regency HR-2 transmitter

1978 – Added a Spectrum Repeater as
A Back-up

1983 – Relocated all systems to ISP Tower



GENERAL ELECTRIC



Indianapolis

Repeater Association

146.70 Started Life about 1969

Jack Kidwell, K9BAD & Damon Duree, W9PEV

Harry White, WA9CYV

Located on CH-8 Tower along with

.76 & .88 repeaters

In 1983 moved to Ch-13 Tower

With antenna at 300Ft.

In Late 80's a coax came available
Up to 700 ft & .70 antenna moved to it.

443.85 repeater put on at 300 ft. level

Original .70 repeater built out of a
Converted mobile telephone radio

A light blue, three-dimensional ice cube with a white letter 'I' on its front face, resting on a dark blue shadow.

INDIANAPOLIS

A light blue, three-dimensional ice cube with a white letter 'C' on its front face, resting on a dark blue shadow.

CARMEL

A light blue, three-dimensional ice cube with a white letter 'E' on its front face, resting on a dark blue shadow.

EXPERIMENTERS

*Some Wild and Crazy Guys
From Carmel*

Alex Keddie – WB9HFU

Dale Schieman – WB9YCZ

Frank Swindler – WB9OPR

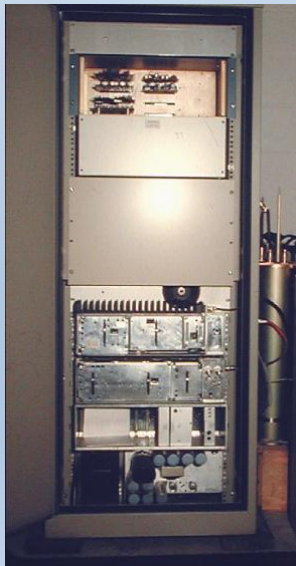


Their First Repeater

147.66/.06

On the Air in 1970

Located on then WIRE-AM
Tower at 44th & Knollton Rd.



Then Came 146.37/.97 in 1972

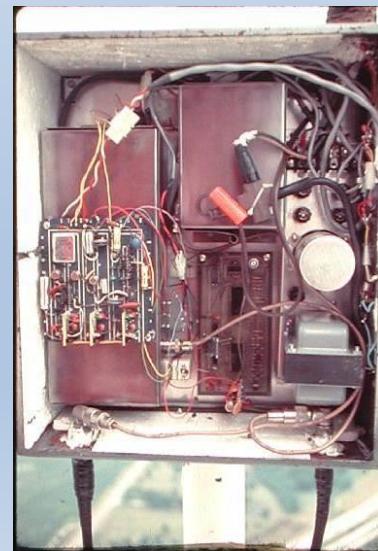
Located N/W of Carmel

On a Commercial Tower

*By now they realized that they just
LOVED building High Profile Repeaters!*

Next Came 147.99/.39 in 1975

Located at 920ft on CH-13 TV Tower



At this time I-C-E was officially Created.



BR: (?) Kim Hurst (?) Alex Keddie (?) Steve Smith (?)
WB9PRS WB9HFU W9HBH

FR: Preston Tuchman (?) Dale Schieman Jack Phelan Frank Swindler
WB9VIF WB9YCZ K9VTS WB9OPR

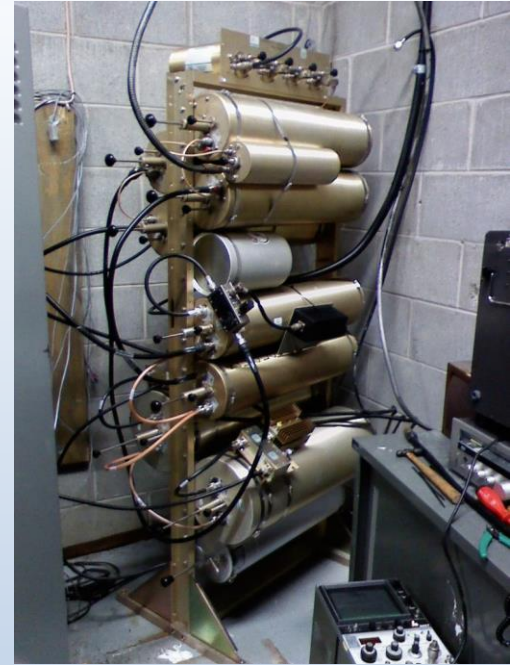
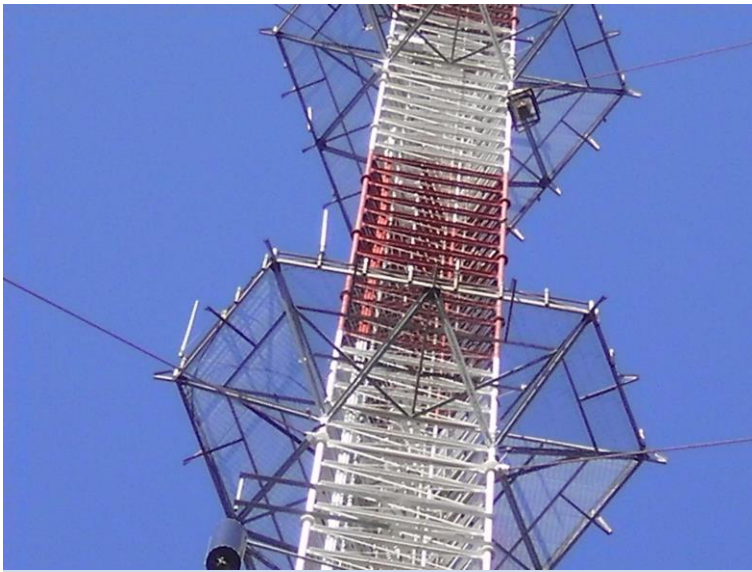
The 1970's were a busy time for *ICE*

442.65 was installed at the WIRE-AM site

**New 53.11 6 Meter & 146.39 repeaters installed on
The TV-40 tower in Noblesville**

**A new Tower for WXTZ-FM was erected and
442.65 moved there.**

**224.92 was moved to a new TV-40 tower
On the NW side of Indy**



***The Next 30 Years saw More Changes
And D-Star Too.***

**TV-40 vacates the Indy Tower – Forcing
ICE to relocate several systems to the NEW
WISH-TV tower.**

**900 MHZ is introduced to Indy from the
WISH Site.**

**3 D-Star Repeaters installed at the
FM Tower.**

**A remote link from Freetown to the 442.65
System installed for SkyWarn.**

**224.98 and 1293.5 systems installed on roof of
City/County Building.**

**443.9 system installed at Noblesville later used
to link The North & South 900 systems with 2
Remote receive sites.**

At their Peak, ICE had 11 Systems Active

53.11/52.11 (Noblesville Twr.)

146.37/.97 (WISH NW. Twr.)

147.99/.39 D-STAR (FM Twr.)

224.98 (C/C Bldg.)

441.35 220 system Hub (WISH E. Twr.)

442.65 (FM Twr.)

443.9 900 system Hub (Noblesville Twr.)

444.125 D-STAR (FM Twr.)

927.9875 (WISH NW Twr.)

927.4875 (IPL Twr.)

1293.5 (C/C Bldg.)

All that and an Auto-Patch Too...

*K9YDO put together the First telephone
Autopatch system in the city.*

*Receiver on top of the Summit House.
Transmitter at his home in Broad Ripple
Connected by a telephone line
Tied to his home phone line.
If the home line was busy, the mobile
Operator got a busy signal.*

R.C.A. Amateur Radio Club



1973 – C.I.R.A. gives up 146.88 due to lack of use & transfers frequency to RCA

The club puts together an all solid state System & installs it at the Sherman Dr. Plant
Uses 2 Heathkit 2-meter radios.

1994 – RCA closes plant & repeater is
Moved to the Mike Koss station

Remote receivers added at
IVY Tech and N. Meridian office.
Linked by 1200 mHz.

2013 – Mike Koss passes away
Station is taken off air.

2014 – Moved to Wayne Twp. Tower
On westside. Converted to GE Radio.

Today it is a Yaesu Fusion Repeater
With the GE as backup.

1979 – RCA club puts on the only RTTY repeater.
Located at the Sherman Dr. plant.
Decoded & regenerated RTTY signals.

1994 – Shut down when everything
Is moved to the Koss station.

Harrison A.R.C.

1985 – Club decided to put up a Repeater on the roof of the Finance Center.

Shortly after moved to the Lawrence Police Dept Tower.

1996- Moved to Lawrence Fire Tower & 3 remote receivers added to improve coverage

Harrison A.R.C.

KM9E was the driving force behind
the system.

2020 – Lawrence decides to demolish tower.

I.C.E. offers 442.65 site.

KM9E takes over 442.65 repeater

And moves 443.25 to the old WISH tower.



***ATV comes to
Indy***



August 1979 – Antenna is installed on CH-8 tower at 165'

September – ATV Beacon is on-air with CH-8 weather RADAR – 8 watts output

June 1981 – CIRA purchases APTRON ATV repeater & installs 2nd antenna at 225'
Power output is 5 watts

August 1982 – Installed remote controlled Wx. RADAR beacon at CH-8 studio. Controlled from 146.76 repeater

October 1983 – System off air for 6 months during move to ISP tower

March 1987 – 100 watt Mirage Amplifier donated to CIRA – Replaces an old 2C39 tube amplifier- Output now 45 watts



1987 – System is used by Pan Am Games

ATV activity increases throughout
1990's

Activity drops sharply during the next 10 years

System is de-commissioned in 2010

When there is no activity at all

(Fade to Black!)

W9DUU's Little ORANGE Box
(443.75)



April 21, 1984 – Placed on air

Originally located at WTTV tower in
Trafalgar

1996 – Moved to the new WISH tower on
N.W. side of Indy.

Entire repeater located at the 750 ft. platform on the tower in a weather-proof container.



Removed from service after Paul passed
away in 2009.

January 27, 2011 - Now back on air at ISP
tower under C.I.R.A.

Yaesu Fusion Repeater installed
In 2015



**POWER COMES TO
6 METERS**

April 1976 – Members of the IPL ARC begin planning for the city's FIRST 6 meter repeater

December 1976 – The repeater is placed on the air – Antenna is at 200 ft. on tower at Morris St. facility. Frequency is 53.2 in / 52.6 out. Call is WR9AKK

May 1977 – Interference to input from R/C airplanes prompts input change to 52.84

Close spacing forces receiver to move to Arlington tower – Transmitter remained at Morris St.

2 sites linked by IPL owned cable system

1995 – System is rebuilt from old IPL low band components after company move to 800 MHz.

GE 300 watt Base Station located
At S. Harding St. IPL tower.

Antenna at 300 ft.

Changed to 51.7 IN / 52.7 OUT

4 remote receive sites at the 4

Corners of the county, carried by the IPL

Private fiber optic system, and voted at

The transmitter site.

*Thanks to the following
For their memories*

Bruce McClain – WB9PGW

Dale Schieman – WB9YCZ

Bill Akin – K9YDO

Jim Rinehart – K9RU

Rick Viehe – KM9E

And the W9DUU Notebook

